

# Jennie Birkholz

*Principal, Breakwater Light, LLC*

[www.breakwaterlight.com](http://www.breakwaterlight.com)

Coordinator, Texas Faith and Health Network



Join the Texas Faith and Health Network!

<https://www.breakwaterlight.com/faith-and-health-network/>

# Health Equity Vs Health Disparities

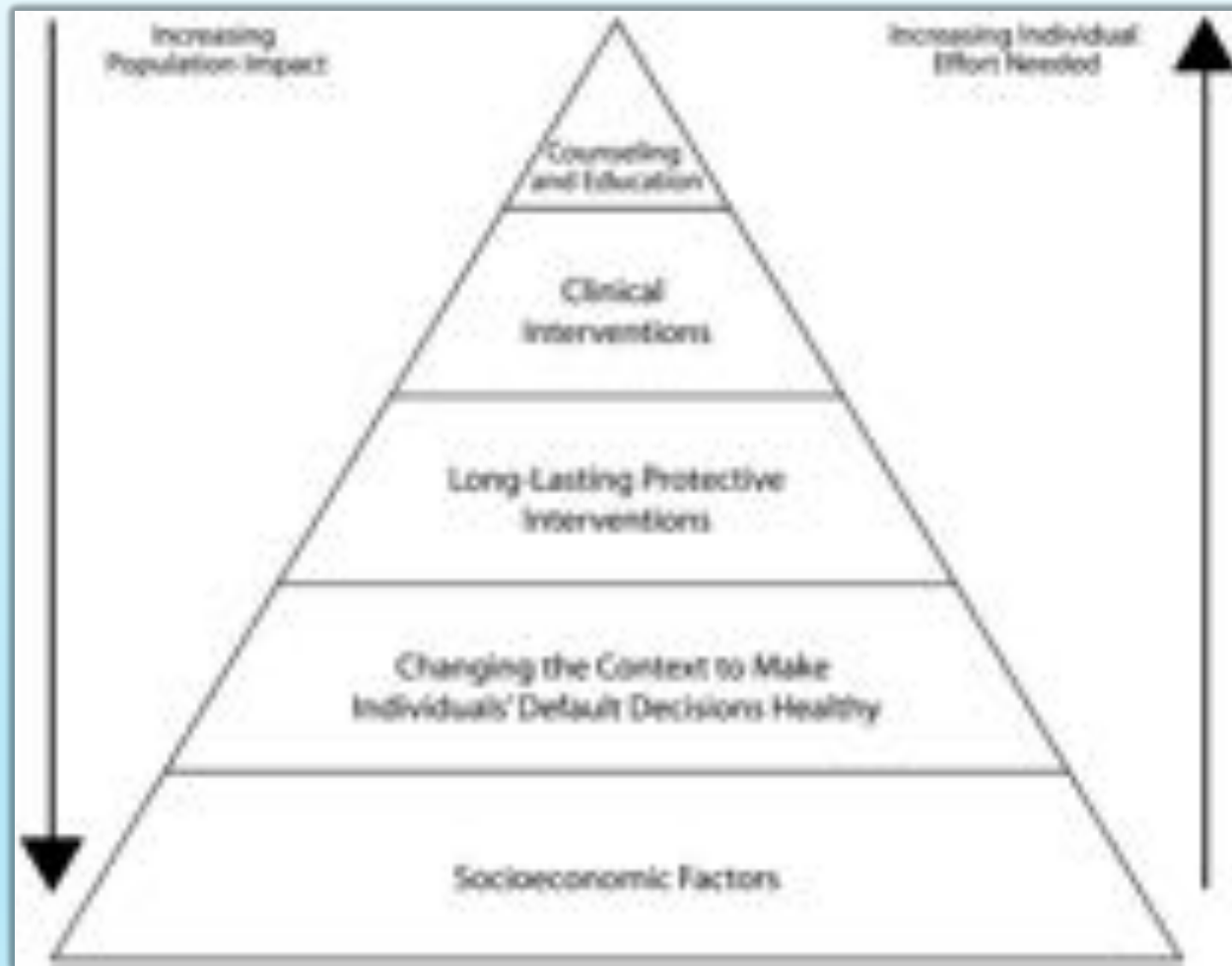
## Health Equity

- ▶ Health Equality is the principle underlying a commitment to reduce - and ultimately eliminate- disparities in health and in its determinates.
- ▶ Social Justice

## Health Disparities

- ▶ The metric used to measure progress towards greater health equity

# The Health Impact Pyramid

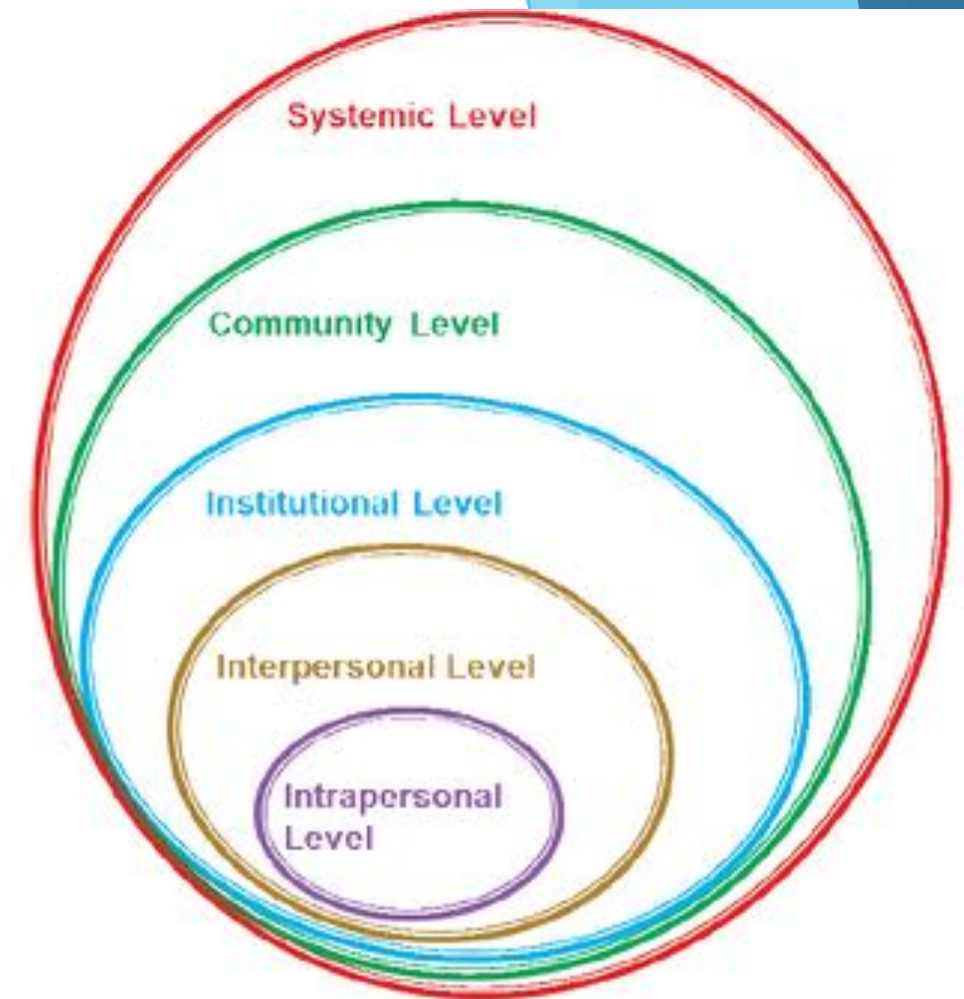


# Root causes are diverse, complex and evolving

- ▶ Social Determinates of Health
  - ▶ Education
  - ▶ Employment
  - ▶ Income Level
  - ▶ Social Support & Community Inclusivity
  - ▶ Food Insecurity
  - ▶ Early Childhood Experiences

# Structural Inequalities Create Disparities

- ▶ Produces systematic disadvantages which lead to inequitable experiences
- ▶ Encompasses policy, law, governance, and culture
- ▶ Refers to race, class, ethnicity, gender, class, sexual orientation



## Systemic Level

- Immigration policies
- Incarceration policies
- Predatory banking

## Community Level

- Differential resource allocation
- Racially or class segregated schools

## Institutional Level

- Hiring and promotion practices
- Under- or over-valuation of contributions

## Interpersonal Level

- Overt discrimination
- Implicit bias

## Intrapersonal Level

- Internalized racism
- Stereotype threat
- Embodying inequities

*“Religion at its best provides a wealth of resources to amplify the healing that comes from the hand of the physician and pharmacist”*

Craig Rennebohn, Author of *Souls in the Hands of a Tender God*

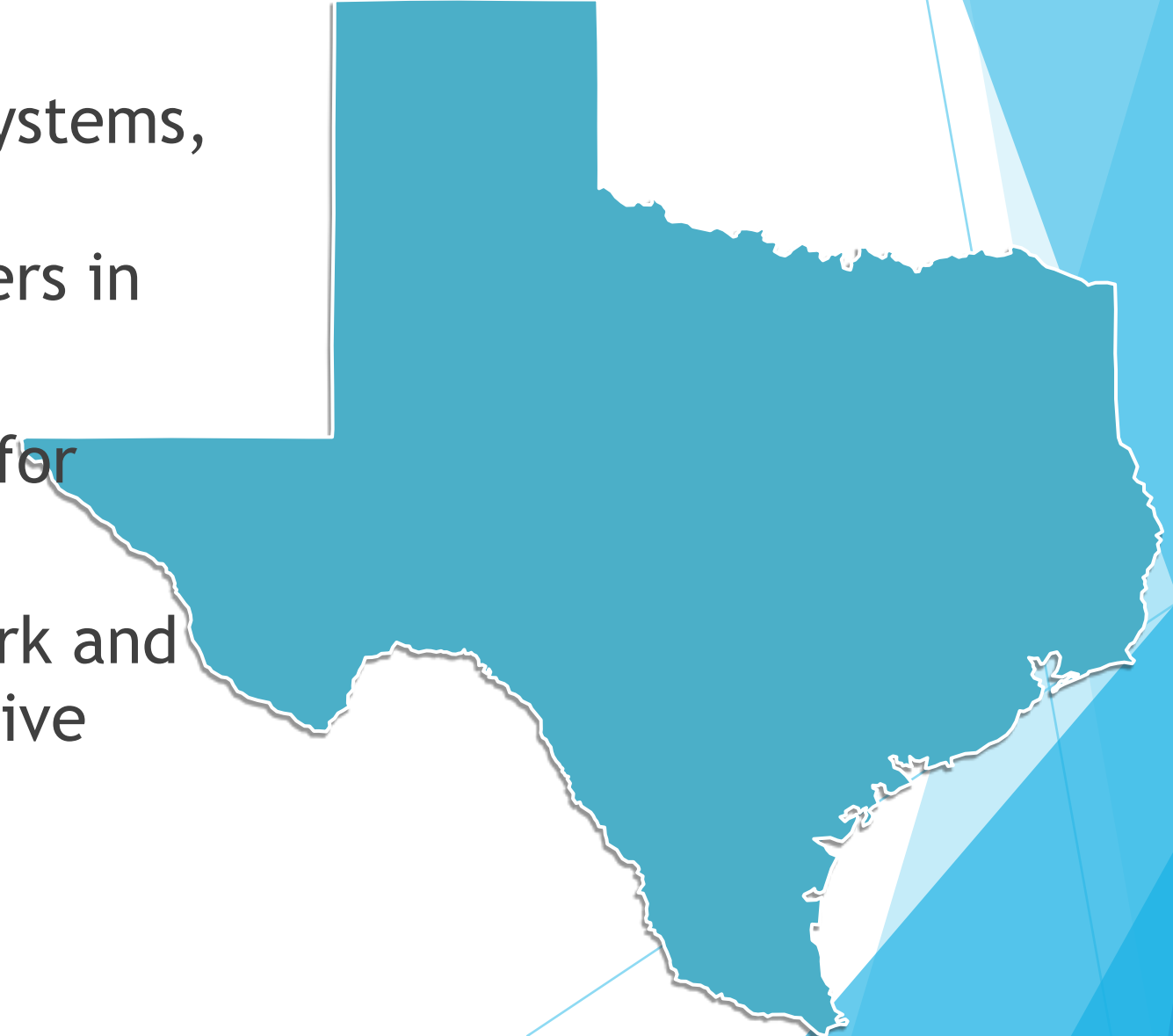
So why faith and health?

# Models - Texas Faith and Health

- ▶ The challenge is not just repeating what others have done.
- ▶ Each community has its own heritage, culture, trauma - and therefore projects have to respond to those unique human needs.
- ▶ Non-traditional and innovative partnerships have been formed

# Texas Faith and Health Network: Collective Impact Collaboration

- ▶ Comprised of Health Systems, Churches, Non-profits, Universities, Researchers in Texas
- ▶ Competition set aside for shared learning
- ▶ United under framework and strategizing for collective impact





# Hospitals as Anchors: Preventing Hospital Readmissions

- ▶ **Houston Methodist Hospital, *Houston, TX***
  - ▶ Church volunteers are trained to support persons who were recently discharged from the hospital.
  - ▶ Patients are given assistance with follow up appointments, filling medications and coordination of **wrap around services**.
- ▶ **Baylor Scott and White Health, *Dallas, TX***
  - ▶ Church volunteers are trained to visit persons who were recently discharged from the hospital.
  - ▶ The volunteers visit the patients **in their homes** and offer **social companionship**.
  - ▶ Measured reduction in hospital readmissions.

# Faith Communities: Behavioral Health

- ▶ **God's Way Christian Baptist Church, Taylor, TX**
  - ▶ Coordinated an open dialogue between the police and African American males at an African American barber shop. This dialogue **openly talked about concerns around policing for African Americans and persons with mental health.**
  - ▶ Free physical and mental health **screenings.** Provides **MHFA trainings** to other churches.
- ▶ **T3 Mental Health and Wellness, Windsor Village Church Family, Houston**
  - ▶ Created program in response to community trauma experienced by violence against African Americans in the media.
  - ▶ **In-house counseling program** with certified coaches, pastors, licensed counselors and interns. Created network with 5 other African American churches.
  - ▶ Hosts multiple activities for **youth** including “lock-ins” with **educational lectures** integrated

# Faith Communities: Chronic Care Disease Management

- ▶ **Community Coalition for Health, *Austin, TX***
  - ▶ Innovative **Diabetes Intervention Program** for African American Community
  - ▶ Community Outreach for Public Health Departments and Healthcare Providers

