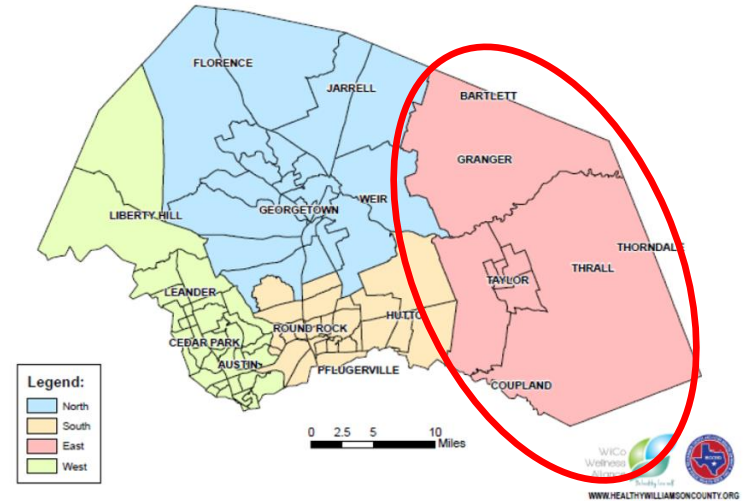


# East Williamson County



PRESENTED BY: RAY LANGLOIS

LANGLOIS CONSULTANT SERVICES, LLC

[ray@langloisconsultantservices.com](mailto:ray@langloisconsultantservices.com)

**Rural Health – Challenges, Assets and Opportunities**

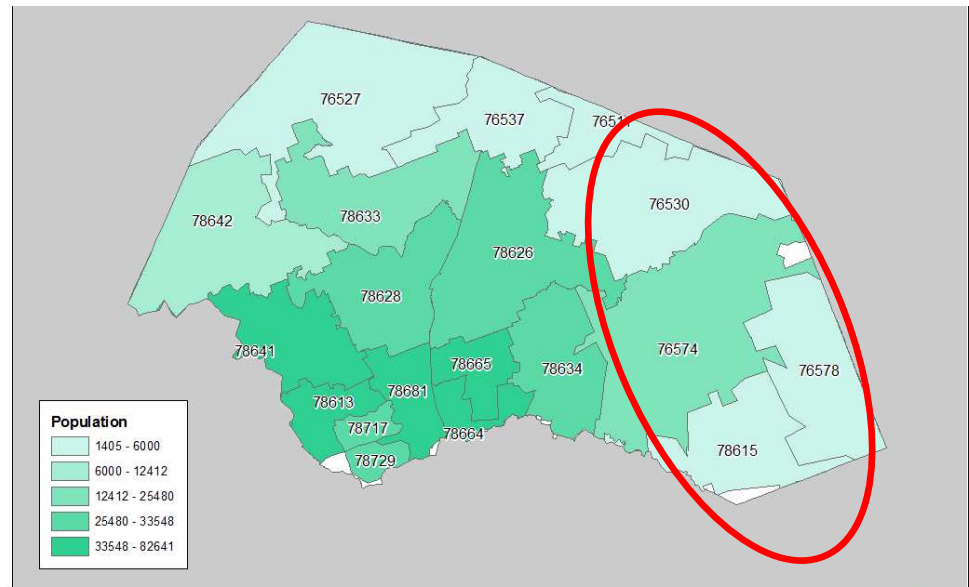
# Population Demographics

## East WilCo Data

- Approximately 30K people
- Nearly 11% growth rate
- 77% White, 7% African American  
38% Hispanic

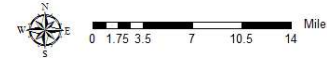
## Total County Population:

547,828



Population by Zip Code

Date: 8/7/2017  
Data Source: Claritas, January 2017 (www.healthwilliamsoncounty.org)



Source: [www.healthwilliamsoncounty.org](http://www.healthwilliamsoncounty.org)

# Social Determinants of Health

---

## East WilCo Data

- ❑ Lower Incomes
- ❑ Higher Poverty Rates
- ❑ Lack of Work-Force Housing
- ❑ Lower Educational Attainment
- ❑ Higher Unemployment
- ❑ High Number of Single Parent Families

Source: [www.healthywilliamsoncounty.org](http://www.healthywilliamsoncounty.org)



# Identified Priority Areas

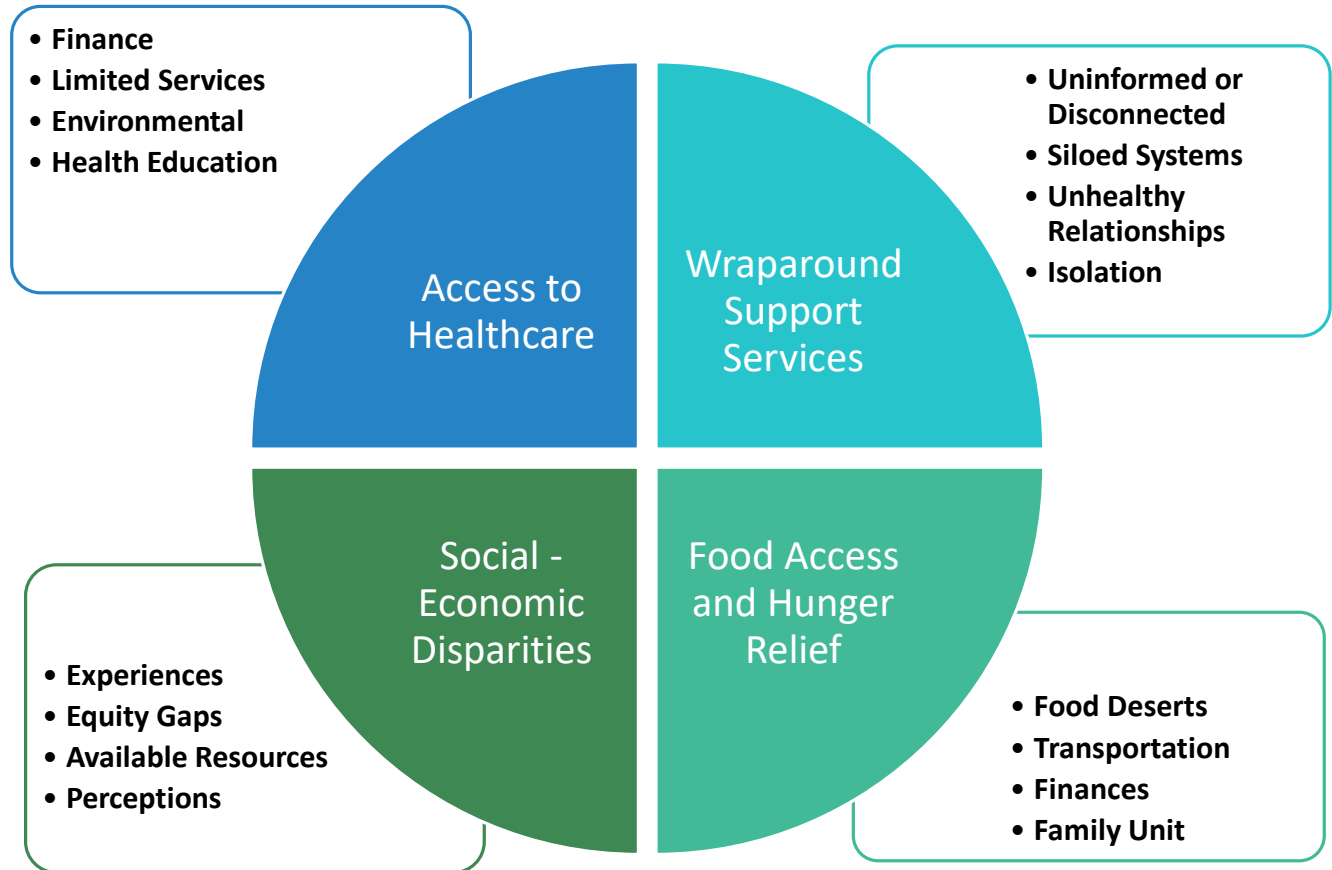
---

## **East WilCo:**


- Access to Healthcare
- Wraparound Support Services
- Food Access and Hunger Relief
- Socio-Economic Disparities

# Root Causes

---



# Community Assets



<p>Access to Healthcare</p>	<p>Baylor Scott and White Health Bluebonnet Trails Lone Star Circle of Care Williamson County/Cities Health District Local Hospitals, Clinics and Doctors</p>
<p>Wraparound Support Services</p>	<p>Lone Star Circle of Care Opportunities Williamson Burnet County Wellness Empowerment Community Ministries Mental Health in Schools Bluebonnet Trails</p>
<p>Food Access and Hunger Relief</p>	<p>Food Pantries Donations School Districts Meals on Wheels Area Stores WIC</p>
<p>Social -Economic Disparities</p>	<p>Opportunities of Williamson/Burnet Shepherd's Heart Housing Authority Churches United Way</p>

# Opportunities

---

