



TEXAS TECH UNIVERSITY
HEALTH SCIENCES CENTER™

F. Marie Hall Institute for
Rural and Community Health



Next Generation 9-1-1 Telemedicine Medical Services Pilot Project

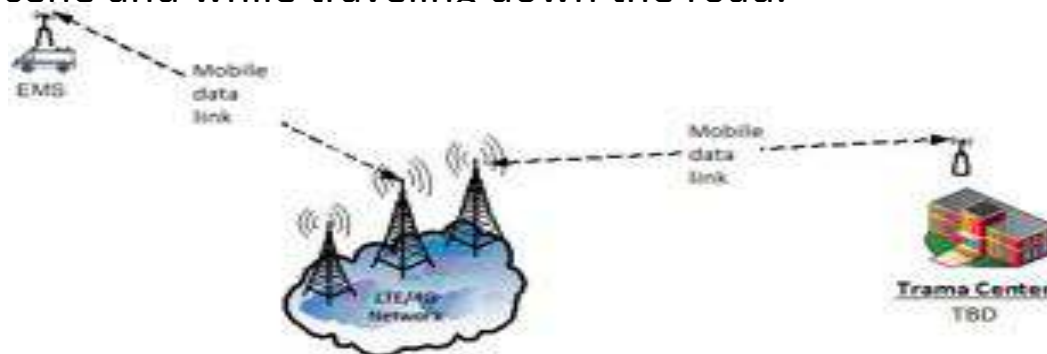
Sharon Rose, RN MAM BSOE
Project Manager





TEXAS TECH UNIVERSITY HEALTH SCIENCES CENTER™

- Under House Bill 479 (84th Legislature), TTUHSC has been tasked with assisting the Texas Commission on State Emergency Communications (CSEC) to establish a pilot project to implement telemedicine technology in rural EMS and trauma facilities located in West Texas.
- Participation within the project will include both trauma facilities and emergency medical services providers. EMS providers will be located in rural areas (a county with a population of 50,000 or less, or a large, isolated, and sparsely populated area of a county with a population of more than 50,000).
- The main objective is to demonstrate whether telemedicine technology will work in the EMS environments and maintain connectivity with area Trauma Centers in the region at the scene and while traveling down the road.





TEXAS TECH UNIVERSITY HEALTH SCIENCES CENTER™



Emergency Medical Care



Texas

- There are 888 EMS agencies in Texas
- EMS is not a statutory mandated service in Texas
- Texas providers are either Volunteer, private or municipal
- Texas has 287 Trauma level I,II,III,IV Trauma Facilities
- There are 17 Trauma I facilities in Texas
- Provider capability in rural Texas averages to 1 responding agency for every 6,333 people or 1 agency per 422 sq. miles

<https://www.dshs.state.tx.us/emtraumasystems/etrahosp.shtm#>

West Texas

- There are 189 EMS agencies in West Texas
- Some counties have more than 1 EMS Service
- There are two counties in West Texas with no EMS
- Some West Texas counties have no Paramedic and others may have only an Emergency Care Attendant
- There are a total of 74 Trauma Level I,II,III,IV Facilities in West Texas
- The two Trauma I facilities are located in Lubbock and El Paso
- Lubbock is the only burn unit in 108 county region

“If you’re going to have a heart attack, you better be first.”

<https://www.texastribune.org/2010/01/05/little-trauma-care-in-rural-texas/>



TEXAS TECH UNIVERSITY HEALTH SCIENCES CENTER™


Distance to Trauma Facilities


RUCC

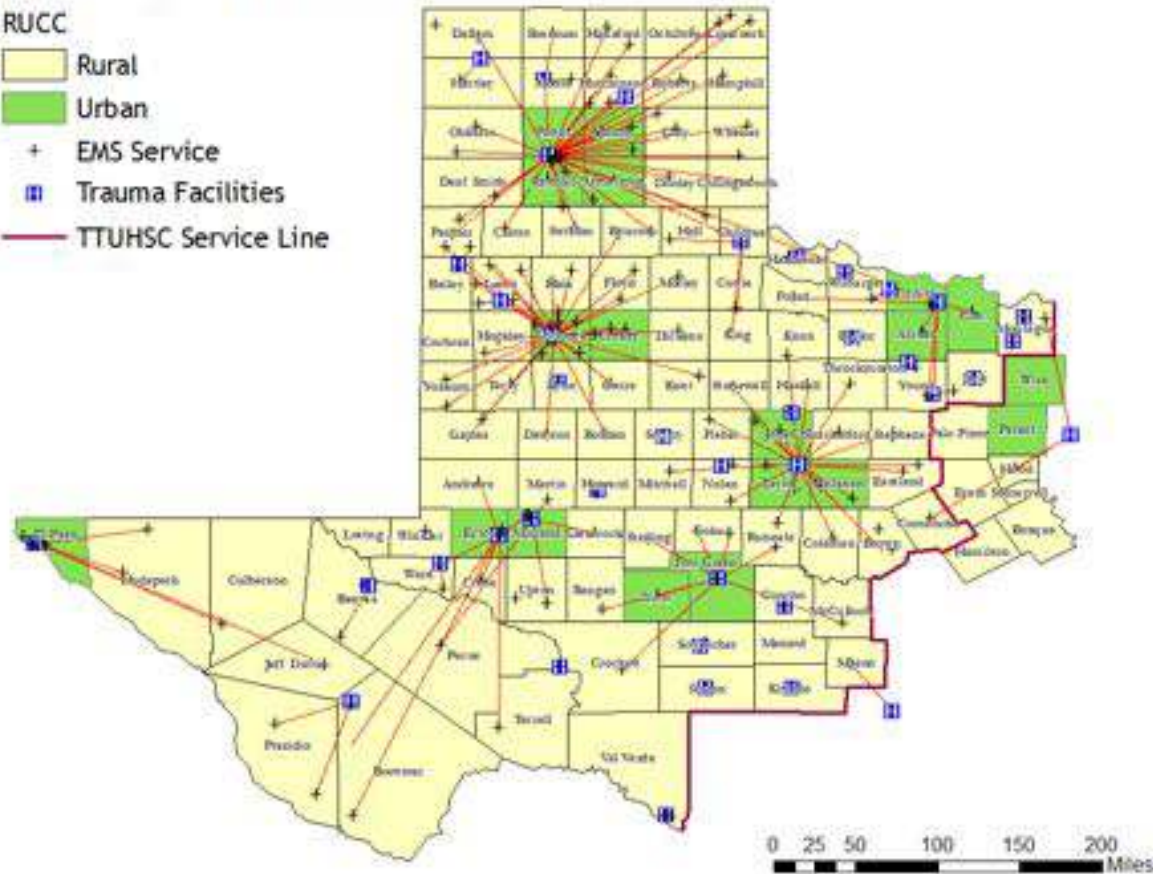
 Rural

 Urban

+ EMS Service

 Trauma Facilities

 TTUHSC Service Line





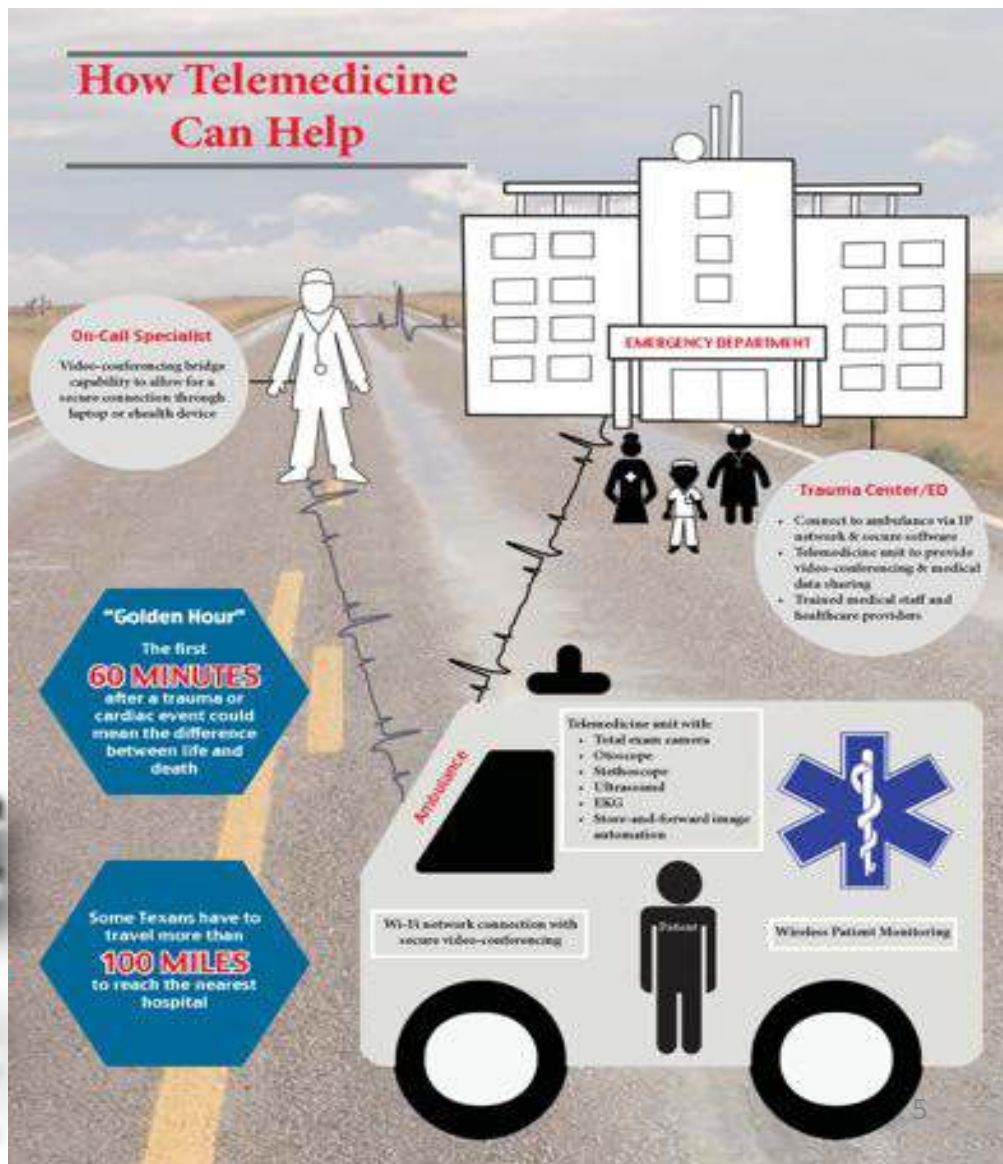
Telemedicine for Pre-Hospital Care

It's another tool

Technology

Provider

Patient



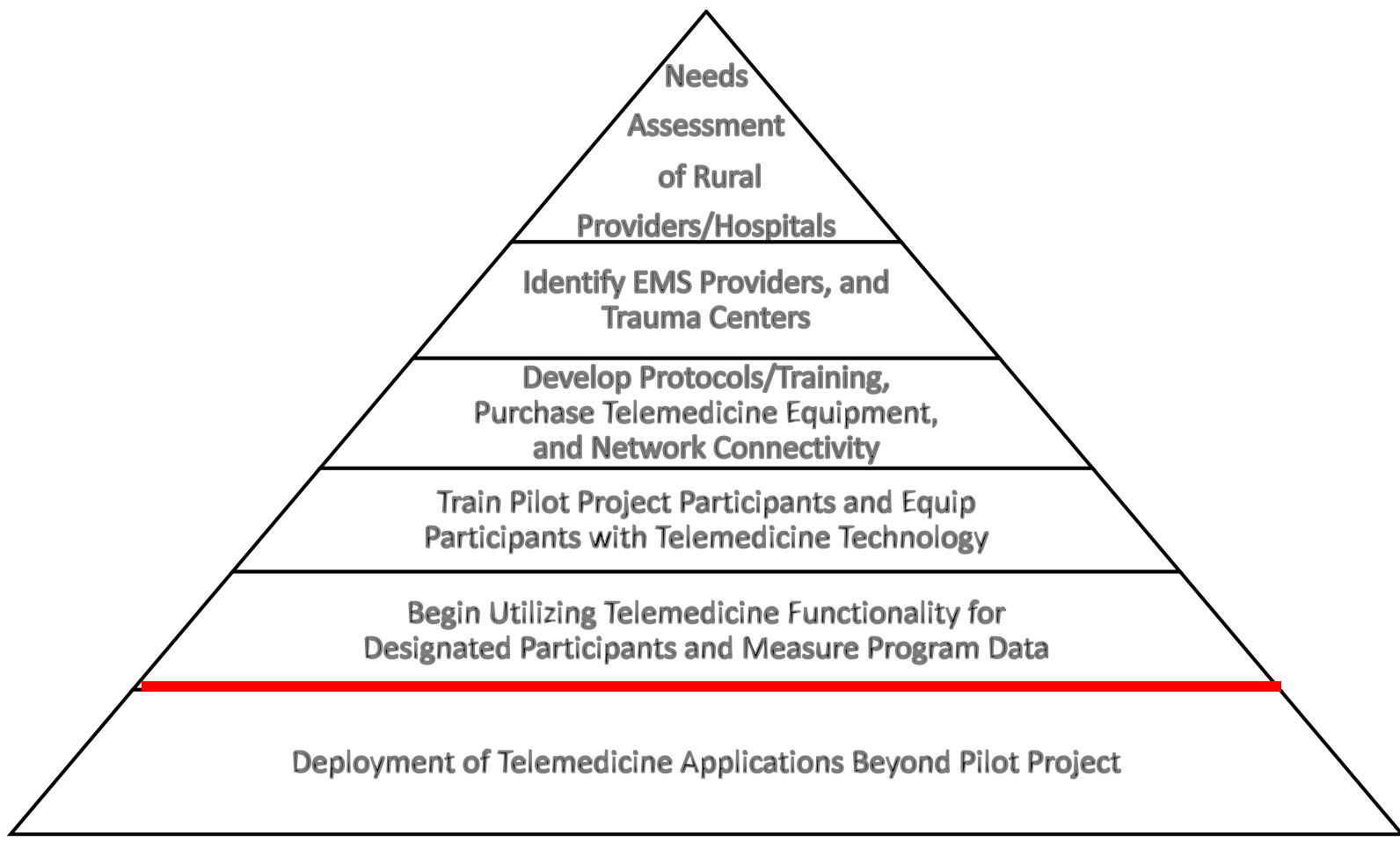


Telemedicine and EMS

- Potential opportunities include
 - Improved patient care:
 - Bring injured patient and physician together as quickly as possible
 - Contributes to providing the right treatment at the right time
 - Well-trained, well-equipped, and availability of access are essential to emergency care at the point of injury
 - Better Information:
 - Allows data regarding patient's symptoms, presentation and state of mind to be seen by physician to better plan an effective treatment plan
 - Improved Care Communications:
 - An integrated EMS telemedicine system would result in more collaborative practice between EMS and treating hospitals
 - Potential Costs savings:
 - Savings could be seen as patients are directed to more appropriate treatment facilities without further screening in hospital EDs, reducing ambulance transfers and hospital bills



Project Implementation

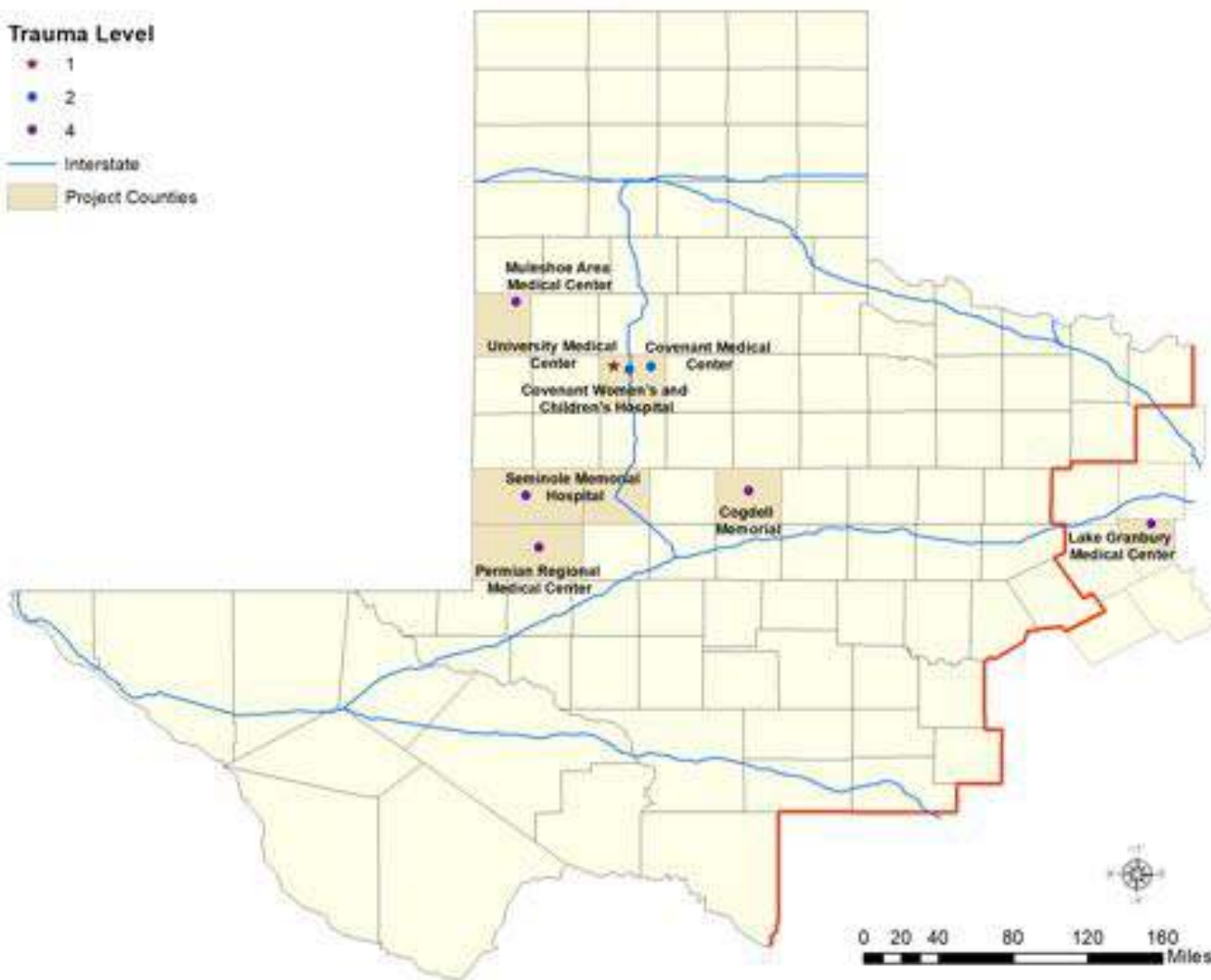




TEXAS TECH UNIVERSITY HEALTH SCIENCES CENTER™

Trauma Level

- 1
 - 2
 - 4
- Interstate
- Project Counties





TEXAS TECH UNIVERSITY HEALTH SCIENCES CENTER™

- First Equipment installation was February 9-10, 2017
- Scurry County EMS, Snyder, Texas

Three known “dead” zones in Scurry County, TX

1. Camp Springs 16.3 miles No connectivity; 2 miles back toward Snyder gained connectivity
2. Lake J.B. Thomas Dam 12 miles Good audio and video received





TEXAS TECH UNIVERSITY HEALTH SCIENCES CENTER™





Lessons Learned

- Initial 9 county area –
 - EMS providers excited
 - Trauma Facilities less enthusiastic
- Get the right stakeholders to the table
- Too many stakeholders at the table creates too many voices at times
- Stakeholders with competing agenda “clouding” issues





Data Collection

- Consist of type injury, whether telemedicine equipment used, outcome
- Since October, 2017
 - Only received 190 data collection sheets
 - 24 Trauma
 - 9 Cardiac
 - 6 Stroke
- Re-training of facilities
- Stories



Contact Information

Sharon Rose, RN MAM BSOE

NG 9-1-1 Telemedicine Project Manager
F. Marie Hall Institute for Rural and Community Health, TTUHSC
sharon.rose@ttuhsc.edu or 806-743-9828

Billy U. Philips, Jr., M.P.H., Ph.D.

Executive Vice President & Director
F. Marie Hall Institute for Rural and Community Health, TTUHSC
billy.philips@ttuhsc.edu or 806-743-1338